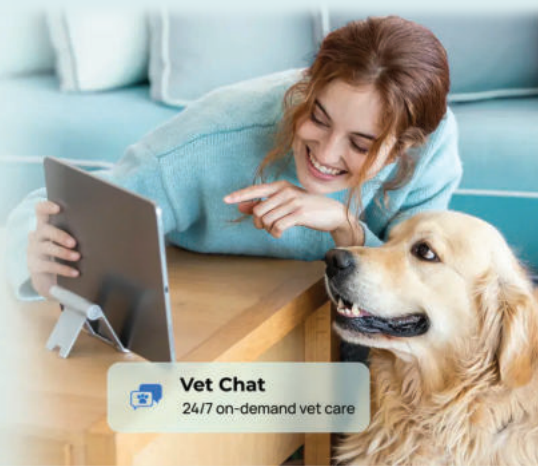


Instant care for your Pet

Save time and money with unlimited 24/7 vet consult through video or chat—get expert help anytime, anywhere, and avoid costly vet visits.



Warranty

Return Policy

mywaggle.com/policies/terms-of-service

+1 855-983-5566

support@mywaggle.com

In-App Chat Support

Functions

Pan/Tilt

Easily adjust your camera's view by dragging the image in the app or using the arrows, offering almost 360 degrees of vision.

Two-way audio

You can use your app to communicate back-and-forth with your pet near the camera

Motion detection

Get notified of movements with app alerts.

Humanoid detection

Filter out false alarms from insects or leaves, so you're alerted only when humans are detected, enhancing motion detection accuracy.

Barking detection

Receive notifications when the camera detects barking.

Record

Save footage using an SD card or the Cloud-Storage Service to capture every moment.

Day & Night

Powerful night vision gives you a clear view, even in complete darkness.

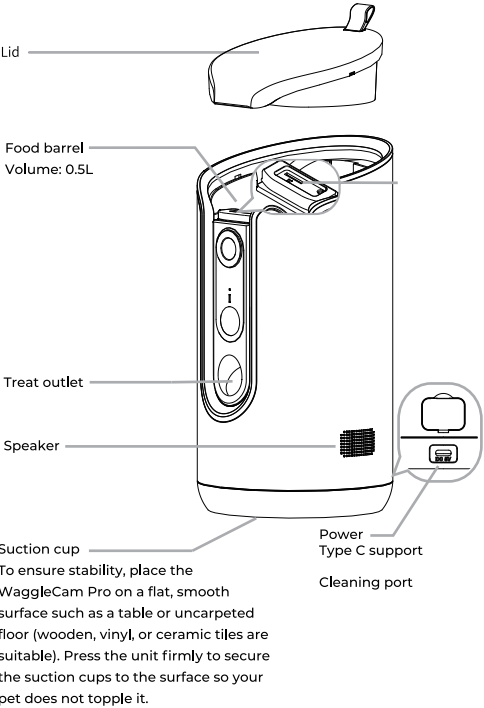


Daytime

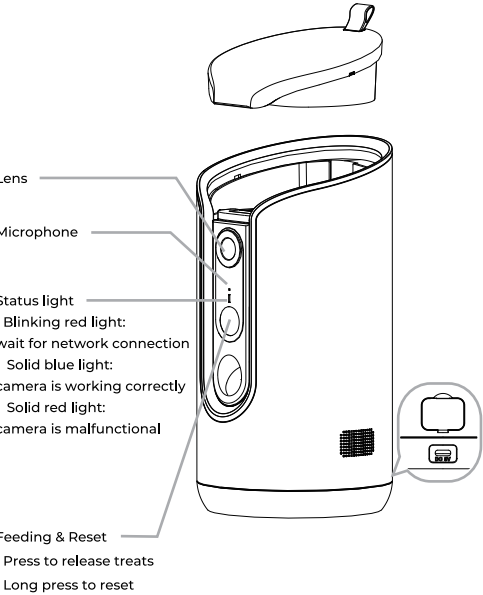


Night

Description



Description



WaggleCam Pro



In the Box

WaggleCam Pro is a new kind of pet camera. It's a pet entertainment device, with a built-in treat tosser designed to amuse your pets and encourage them to move and play. And when you're away, the app gives you a window into their world.



Camera



Power adapter



Type C cable



Brush



Manual

Usage



Schedule treat releases through the app

Download the "**Waggle Pet app**" and add your device. Set up a feeding plan in the app, and the treats will be automatically released on schedule.



How to clean

Open the silicone plug on the cleaning hole, then use the provided small brush to clean it.

App Download

Download and install the **Waggle Pet App**



App Store



Play Store

Registration

Step 1 Open the App, click "**Sign up now**" to register.
If you already have an account, click "Log In"

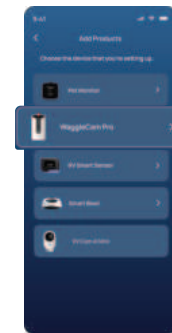


Step 2 Enter a valid email address and accept the privacy agreement.
Then enter your **username** and **password**.



Device Adding

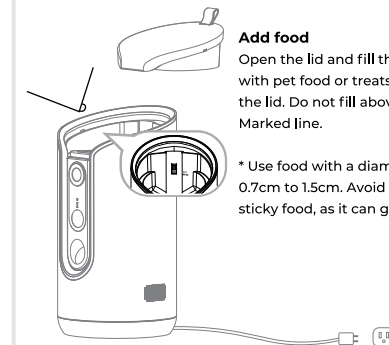
Step 3 Click **Add Device** then select **WaggleCam Pro**



Step 4 Register the **WaggleCam Pro** by scanning the **QR code** on the back of the camera and follow the on-screen instructions .



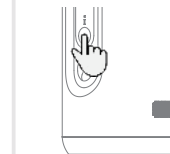
Usage



Add food

Open the lid and fill the barrel with pet food or treats, and close the lid. Do not fill above the MAX Marked line.

* Use food with a diameter of 0.7cm to 1.5cm. Avoid powdery or sticky food, as it can get stuck.



How to release treats manually

1) Power on the device
2) Press the "Feeding" button briefly to release one portion of treats.
Each serving contains 1 to 10 pieces, depending on the size. The treats will generally be projected 0.5 to 1 meter away.

Suction cup

To ensure stability, place the WaggleCam Pro on a flat, smooth surface such as a table or uncarpeted floor (wooden, vinyl, or ceramic tiles are suitable). Press the unit firmly to secure the suction cups to the surface so your pet does not topple it.